

Subject: Geography

Unit Title: Bright Lights Big Cities



Charnock Hall Primary Academy
A L.E.A.D. Academy

Knowledge statements:

- I know London is the capital city of England.
- I know the Great Fire of London happened in 1666 in London.
- I know human features are man made features and physical are naturally formed.
- I know 4 countries make up the United Kingdom

We are Geographers:

- We can use world maps, atlases and globes to identify different countries.
- We can spot and sort human and physical features.
- We can recognise landmarks using marks and aerial photos.

Key vocabulary:

Capital City - A city that is home to the government and ruler of a country.

Human features - Human-made features, such as buildings, roads and bridges.

Physical Features - Naturally-formed features, such as cliffs, rivers and forests.

Settlement – A place where people live and work.

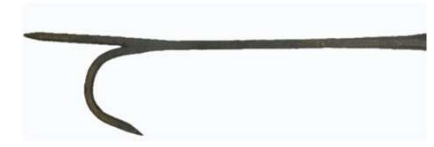
Country – A large area of land that has its own government.



Water bucket



Fire squirt



Fire Hook



Houses of Parliament



St Paul's Cathedral



Tower of London



The Gherkin



The Shard



Buckingham Palace



Samuel Pepys wrote a fire hand account of the Great Fire of London in his diary.



Thomas Farriner was the baker of King Charles II. His Bakery on Pudding Lane is where the Great Fire of London Started.